

TAKE
FREE

A Japan Heritage and Azalea Town

TATEBAYASHI TRIP

Tatebayashi Sightseeing Guidebook



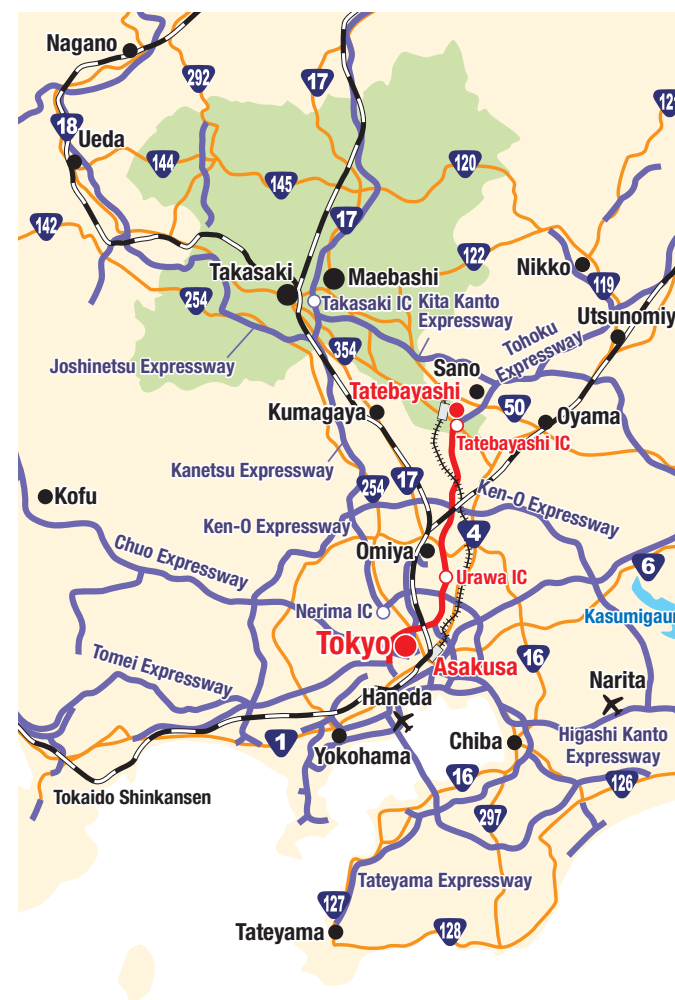
Authorized in 2019

SATO-NUMA

The wetland culture of Tatebayashi shaped
by the lakes of prayer, fertility, and protection



Access to Tatebayashi



By train

Journey time Approx. 1 hr 20 min
Tatebayashi Station ↔ Tokyo Station
Tobu Iseaki Line Limited Express **Journey time** Approx. 1 hr
Tatebayashi Station ↔ Asakusa Station
Tobu Iseaki Line Limited Express **Journey time** Approx. 50 min
Tatebayashi Station ↔ Kitasenju Station
Tobu Iseaki Line Local Train **Journey time** Approx. 30 min
Tatebayashi Station ↔ Kuki Station ↔ Omiya Station
JR local train Approx. 20 min

By car

■ Tohoku Expressway
Journey time Approx. 35 min
Tatebayashi IC ↔ Urawa IC
47km
■ Kanetsu Expressway
(Take the Takasaki JCT to the Kita Kanto Expressway)
Journey time Approx. 30 min
Ota Kiryu IC ↔ Tatebayashi City
■ Kita Kanto Expressway
Journey time Approx. 30 min
Sano-Tanuma IC ↔ Tatebayashi City

By express bus

The airport bus runs every day and connects Tatebayashi with Narita Airport and Haneda Airport in about two hours, making it convenient for domestic and international travel and business trips by air.

(Direct)
Tatebayashi City Hall Bus Stop ↔ Haneda Airport Terminal
(Direct)
Tatebayashi City Hall Bus Stop ↔ Narita Airport Terminal

Tatebayashi sightseeing mascot



Pon-chan

For sightseeing inquiries
Tatebayashi City Economic Affairs Dept. Tsutsuji-no-machi Tourism Division
TEL 0276-74-5233

For inquiries about Japan Heritage stories or assets
Tatebayashi City Board of Education Cultural Promotion Section
TEL 0276-71-4111

Edited and published by the Tatebayashi "Japan Heritage"
Promotion Council



Tatebayashi
City Tourism
Association

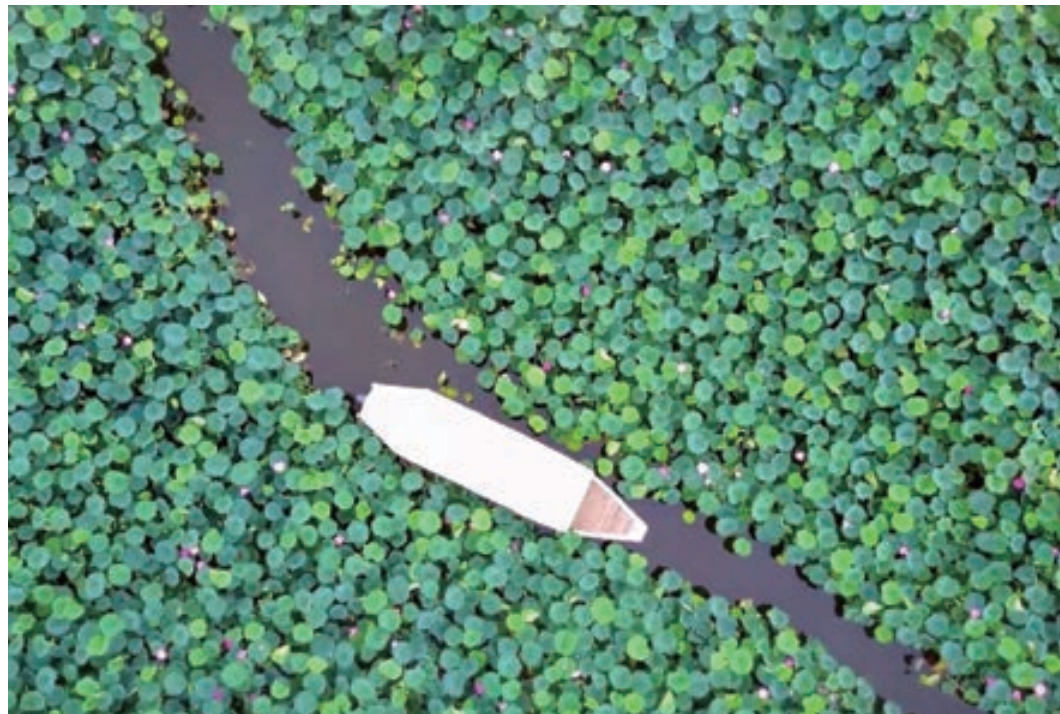


SATO-NUMA.JP



Development Project for Tourist Spots
(Promotion project for the general use
of local cultural properties)

Lotus Flower Pleasure Boat (Jo-numa)



In the summertime at Jo-numa and Kojo-numa, the pink flowers of the native lotus bloom, giving a wondrous color to the water's surface. The spectacle of taking a boat among the lotus leaves like a cruise through the jungle is a summer splendor only to be seen in Tatebayashi. **B-4**

Sights only to be found here. Tatebayashi City.

CONTENTS

Sato-Numa, Tatebayashi City - Authorized in 2019 by Japan Heritage	P.03
Tsutsujigaoka Park - National Site of Scenic Beauty	P.05
Flowers and Gardens	P.07
Girls Tour	P.08
Sightseeing and Industry	P.09
A Place of Four Seasons	P.11
The Lake of Prayer Morinji-numa Area	P.13
The Lake of Fertility Tatara-numa Area	P.15
The Lake of Protection Jo-numa Area	P.17
Sato-Numa Sightseeing Experience	P.19
Clear night skies and a walker's paradise	P.21
EVENT CALENDAR Events through the year	P.23
Suggested Itineraries - Spring, Summer, Autumn, Winter	P.25
Local Food	P.27
Tatebayashi Area Map	P.29

25 Raccoon Dog Statues (Morinji Temple)



With the spirit of "prospering and winning" in their very name, the raccoons of Tatebayashi are said to be raccoons that work hard every day, are a benefit to society, are good for business, keep families together, and share good fortune. **C-3**

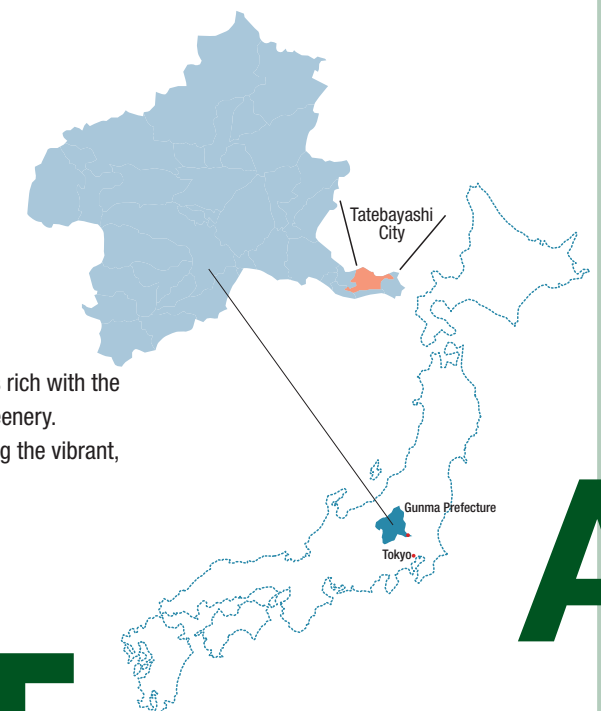
A Japan Heritage Town

Sato-Numa in Tatebayashi has been recognized as a Japan Heritage site by the Agency for Cultural Affairs as "SATO-NUMA, the wetland culture of Tatebayashi shaped by the lakes of prayer, fertility, and protection".



Garden City

Tatebayashi is a place of wetlands rich with the natural scenery of flowers and greenery. Relax and enjoy sightseeing among the vibrant, blooming flowers and birdsong.





Japan Heritage is recognized by the Agency for Cultural Affairs for the local history and culture as being a Japanese heritage for the purpose of promoting tourism and reminding local residents of the attraction of local areas.



Authorized in 2019 by Japan Heritage

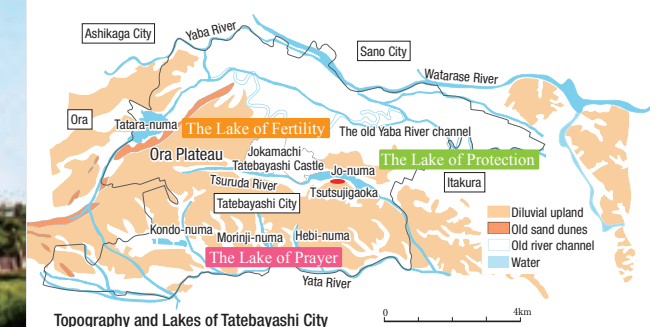


日本遺産
JAPAN HERITAGE

Sato-Numa, Tatebayashi City

The wetland culture of Tatebayashi shaped by the lakes of prayer, fertility, and protection

Overlooking the mountains of Kanto, the many lakes of Tatebayashi are waiting to be discovered. The lakes of Tatebayashi are close to where people live and are deeply connected with people's lives akin to *Satoyama*, or the area between village and mountain. By using the wetlands, people have been able to protect the environment and nurture a culture of Sato-Numa (literally, "the village of lakes"). Each lake of Sato-Numa in Tatebayashi differs in its aspect and nature. The history of the area can be told in other ways with the unspoiled landscapes and religion of Sato-Numa present in Morinji-numa being the "the lake of prayer", the fruits of the lakes that sustain life in Tatara-numa being the "the lake of fertility", and Jo-numa which has helped to defend the scenic spots of Tatebayashi Castle and azalea being the "the lake of protection". Trace a path into Sato-Numa and experience the wetland culture of Tatebayashi shaped by each and every lake.



The Lake of Protection Jo-numa

Tatebayashi Castle with the natural stronghold of Jo-numa
Tsutsujigaoka safeguarding 800-year-old azaleas
Protected lakes where fishing was banned up until the Meiji Restoration

* Jo-numa area → P17

New! Sato-Numa featured in the Azaleas Film Museum Sato-Numa - Special Exhibition

An exhibition showcasing Sato-Numa including three lakes. Introduced in an easy-to-understand way with photos and information.

New 4D Movie - Sato-Numa, Tatebayashi's Japan Heritage
With 3D images, mist, and vibration effects, the movie can deepen everyone's understanding of Sato-Numa, regardless of age. (Released April 2020)

*Azaleas Film Museum → P6



The Lake of Fertility Tatara-numa

Tatara, named after the legend of giants and iron making
The feats of Oya Kyuhaku (tree planting and irrigation canals) and wheat crops
Development from modern day milling to food (fermentation) industry.

* Tatara-numa area → P15

The Lake of Prayer Morinji-numa

The wetlands of Morinji-numa, a natural treasure of Gunma Prefecture, and the flora and fauna
The ancient temple of Morinji and Bunbuku Chagama
Features of Sato-Numa supporting people's everyday lives

* Morinji-numa area → P13

Tatebayashi Tsutsuji Festival

About 10,000 plants in 100 varieties in full bloom

The main event, Tatebayashi Flower Town, is held when the azaleas are at their best. Many events are held during the festival, including a free guided tour of the ancient azalea trees, attracting over 100,000 people.

■ Admission Fee: Before/After best time to see ¥310

Best time to see ¥630 (¥520 for groups of 20 or more)

Free for junior high school students and under

* For more details please visit the website.



Tsutsujigaoka Park Guide

April 10 - May 15



Tsutsujigaoka Fureai Center

Azaleas Film Museum

With 3D images, mist, wind and vibration effects, the 4D theater gives a sense of the azaleas in full bloom even out of season. Works by Kogure Shinbo, a print artist from Tatebayashi, are also on display in the gallery.

■ Open: 9:00 - 17:00 (except Mon. and New Year holidays)

■ Admission: Adults ¥500 (¥400), elementary and junior high school students ¥250 (¥190)

* Prices in brackets for groups of 20 people or more



Food Court (Sugar Hill Cafe)

With comfortable seating for 40 people, visitors can enjoy the cafe's specialty hamburgers and freshly brewed coffee. The cafe restaurant on the lawn terrace is also a popular place to enjoy some BBQ delights.

■ Open: 11:00 - 17:00

(except Mon. and New Year holidays)

■ Tel: 0276-52-8306



From Edo to Reiwa

Eternal azaleas enduring for four hundred years

National Site of Scenic Beauty

Tsutsujigaoka Park B-4

Tsutsujigaoka Park has long been called Tsutsujigasaki, a place planted with azaleas. It is also recorded that during the old Edo period with its history of azalea blossom viewing, an extravagantly magnificent azalea blossom viewing banquet was held by the Lord of Tatebayashi Castle at the time.

In 1934 the park was designated as a national cultural property, a site of scenic beauty.

Locally, the deep red flowering azaleas are described as "burning" and the Tsutsujigaoka Park itself is called *Hanayama*, or "mountain of flowers".

Azalea beloved by Koto Naishi

Nitta Yoshisada reportedly planted a giant yama-tsutsuji azalea tree for his wife (Koto-Naishi).

In the early Edo period, the daimyo at the time, Sakakibara Tadatsugu, transplanted the tree from his domain to this spot.

It is thought to be about 800 years old.

The flowers are deep red and present a glorious fiery sight during the flowering season.

Tsutsujigaoka Park Flower Calendar

* Flowering times may change depending on the weather.

Jan	Feb	Mar	Apr	May	Jun	Jul	Aug	Sep	Oct	Nov	Dec
Wintersweet	Plum	Cherry	Azalea		iris	Hydrangea	Autumn zephyrilly	Equinox(flower)		Autumn leaves	Daffodil
	Daffodil						Lotus flower				
Christmas rose										Winter cherry	

Girls Tour

The members of the largest community of camera girls in Japan, "Camera Girls", visited Tatebayashi in summer.



Camera Girls go to

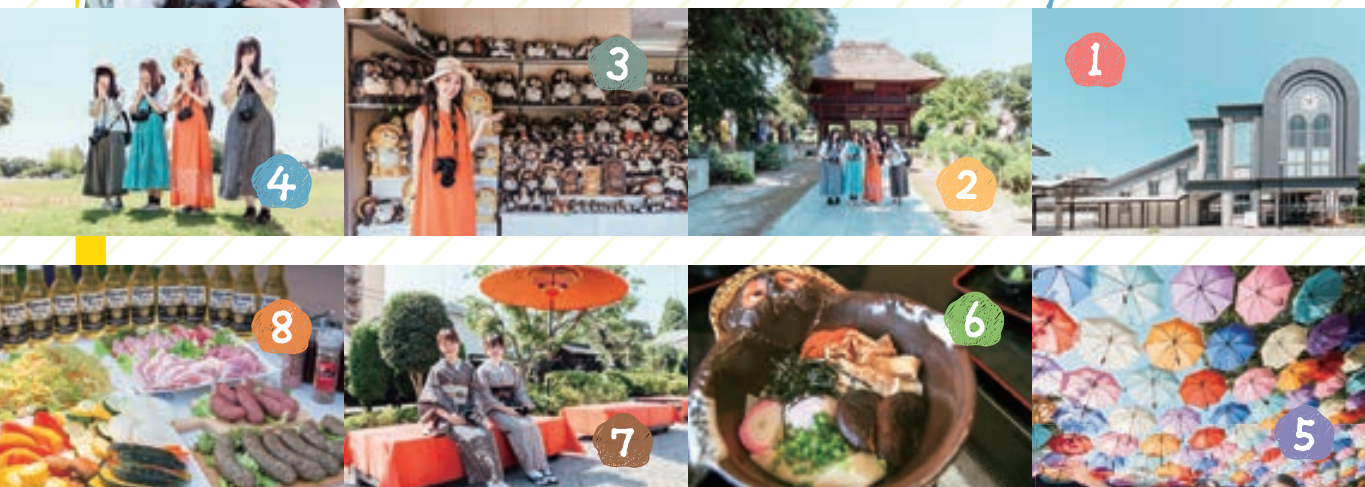
Lotus Flower Festival

The Lotus Flower Pleasure Boat where visitors can enjoy the clusters of lotus flowers in full bloom in Jo-numa, is a refreshing sight only to be found in Tatebayashi. Cruising around the lake of Jo-numa for around 30 minutes is something like a jungle cruise. Rare species naturally growing since ancient times can also be found in Jo-numa. Also during the season in Tsutsujigaoka Park, is the "Lotus Flowers of the World" exhibition which showcases different lotus flowers from around the world.

Lotus Flower Pleasure Boat

- Boat Tours: July 10 - August 15
- Times: 8:30 - 15:00
- Boat Pier: Within Tsutsujigaoka Park
- Duration: Approx. 30 min
- Cost: Adult ¥900, Child ¥300
- * Groups (20 people or more) Adult ¥810, Child ¥270
- Contact: Jonuma Kanko Co., Ltd. 0276-73-7800
- * May be canceled in times of bad weather. **B-4**

Loads of Photo Spots



- 1 Girls tour starts from Tatebayashi Station west exit!
- 2 On to Moringi Temple, home of the Bunbuku Chagama, folktale. 25 raccoon statues welcome visitors along the path to the temple.
- 3 There are nearly 1,000 raccoon figurines in the row of stores at Moringi. Photogenic!
- 4 Say a prayer at Moringi-numa, the lake of prayer.
- 5 In the summer a sky road of colorful umbrellas appears among the restaurants in the castle town in front of the city hall.
- 6 Enjoy a delicious lunch at the popular Hanayama Udon restaurant.
- 7 Kimonos looking great on the castle path that remains of the old castle town.
- 8 Enjoy a BBQ at the food court in the Tsutsujigaoka Park. There's no better way to finish off than with some meat and beer!



Flowers and Gardens

"Garden City" Tatebayashi has many gardens and flower gardens, all of which are beautiful and soothe the soul of those that visit.



Tobu Treasure Garden

The Tobu Treasure Garden was so named as visitors can come across all sorts of flowers much like a treasure hunt. The garden is open in spring (Apr - Jun). Along with the centerpiece Rose Garden and the Seasonal Garden of various flowers to enjoy through the year, there is a chapel, a cafe restaurant, and a garden shop in this garden area the size of 2 Tokyo Domes.

- Address: 1050 Horiku-cho, Tatebayashi City
- Tel: 0276-55-0750
- Open: 9:00 - 17:00 early April - early June
- Admission: ¥500 - ¥1,800 (may change depending on flowering season)

C-3

The former Villa of Akimoto (Tsutsujigaoka Daini Park)

The former villa of Akimoto was built in the late Meiji era. The building closely related to the Akimoto family, former Lords of Tatebayashi Domain, was used as a villa by Akimoto Okitomo and his child Harutomo.

- Address: 8-1 Obiki-cho, Tatebayashi City

Iris Festival

Iris of many different colors in full bloom.

- Time: Early June to late June

Autumn Leaves Light Up

See the changing colors of the autumn leaves lit up at night.

- Time: 16:30 - 20:00 Late November - early December

* Both around Tsutsujigaoka Daini Park

Various events will also be held during these times.

B-3



Gunma Museum of Art, Tatebayashi

Prefectural Museum of Art on the shores of Tatara-numa in Hinata-cho, Tatebayashi City. Following a policy of collecting works of art that facilitate understanding of the richly creative development of modern and contemporary art, the collection of various pieces from Japan and overseas focuses on the theme of the relationship between nature and mankind. The core of the collection is home to French sculptor François Pompon's sculptures, drawings and numerous materials posthumously left in his atelier.

- Address: 2003 Hinata-cho, Tatebayashi City
- Tel: 0276-72-8188
- Open: 9:30 - 17:00 (except Mon. and New Year holidays)
- * Last entry at 16:30
- Admission: Changes depending on exhibition.

B-2



Industry

80,000 people! Japan's biggest noodle event!



Event

Tatebayashi Noodle Grand Prix

First held in 2011, this large-scale noodle event attracts over 40 stores offering all kinds of noodles such as udon, soba, ramen, pasta and yakisoba. Each store puts forward their best noodle dish and visitors get to choose their favorite, picking the eventual Grand Prix winner. Each bowl of noodles costs less than ¥500 = bonus! Try them out for yourself!

- Event Date: Mid-Apr (2 days)
- Venue: Tatebayashijo Yumehiroba
- * Event dates change each year.

B-3

Japan's hottest - Tatebayashi food event



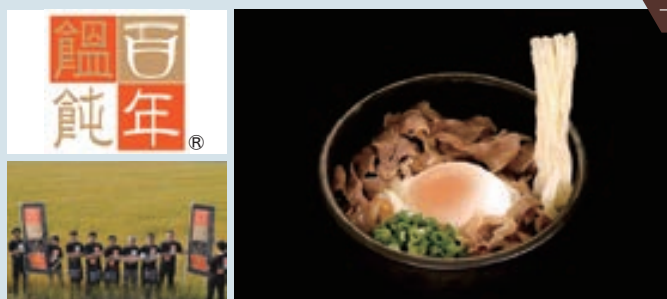
Event

Super Hot, Super Sweet, Super Cold Food Election

Using local food and bringing the town to life, to beat the Tatebayashi summer heat. Restaurants from the city put on original dishes of super-hot, super-sweet, and super-cold food during the event. Prizes available for those who visit the restaurants involved and get a voting stamp after eating something super-hot, sweet or cold from the menu.

- Time: Early July to late August
- * Look for the 激グルメ (geki-gourmet) mark!

A new udon brand is born in Tatebayashi!



Udon

Tatebayashi Udon "Hyaku-Nen Udon"

100% Ora-Tatebayashi wheat, formed by the natural winds and waters, is made into *hyaku-nen* (100 year) wheat with the help of Nisshin Seifun Co., Ltd., a milling company founded in Tatebayashi. The udon which uses more than 30% of this wheat is Hyaku-Nen Udon.

The noodles are known for the soft yet chewy texture. Hyaku-Nen Udon is available at restaurants including those which are members of the Udon-no-Sato Tatebayashi Promotion Association.

* Food Guide → P27

It's all about eating great ramen in Tatebayashi



Ramen

Tate-Ra

Tate-Ra is all about eating great ramen in Tatebayashi.

The city has a wide variety of different types of ramen shops so be sure to discover your favorite ramen!

In October 2019 the association for ramen shop owners, Tatera Club, was set up and currently works on planning events and developing products.

Stay tuned for future activities!

* Food Guide → P27, 28

Sightseeing

Calpico "Mirai" Museum

Opened in 2019, this is the first factory tour setup of the Calpico facilities.

The museum has plenty of Calpico attractions including animations, factory tours, tastings and goods for sale.

- Address: 166 Oshinden-cho, Tatebayashi City
- Tours: Throughout the year (except for specified dates and New Year holidays)
- Admission: Free
- Bookings: By phone or website
- Tel: 0276-74-8593

Ferment

A tour facility commemorating 100 years of the Calpico brand



B-3

Nisshin Milling Museum

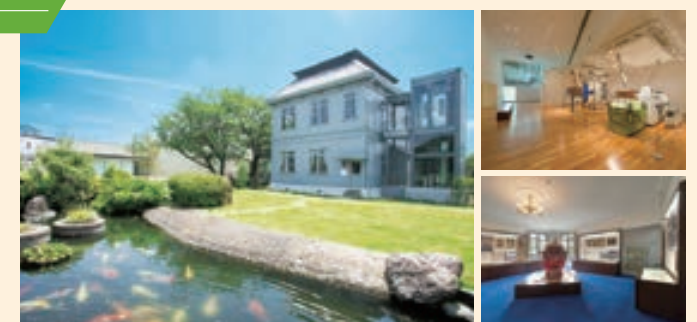
The Nisshin Seifun Group opened a museum on the theme of flour milling in Tatebayashi City where the company was founded. The museum introduces the history of the company as well as the latest milling technologies.

Visitors also receive a lovely present afterwards.

- Address: 6-1 Sakae-cho, Tatebayashi City
- Tours: Throughout the year (except Mon. and New Year holidays)
- Admission: Adult ¥200, Child ¥100
- Bookings: Not required
- Tel: 0276-71-2000

Mill

A museum on flour milling, valuable around the world



B-3

Factory Tour



Shoda Shoyu Co., Ltd.

One of Japan's leading soy sauce manufactures and the pride of Tatebayashi. Factory tours available.

- Address: Tatebayashi East Factory (6013 Tobu Kogyo-Danchi, Oshima-cho, Tatebayashi City)
- Tours: Apr - Nov (except weekends, national holidays and New Year holidays)
- Bookings: 0276-74-8100 (Booking required at all times)
- Admission: Free

A-5

Factory Tour



Tatebayashi Udon Co., Ltd.

A long-established udon store, in business for over 70 years.

Factory tours of the dry noodle manufacturing process available.

- Address: Kondo factory (656-1 Kondo-cho)
- Tours: Tues - Fri (except national holidays and New Year holidays)
- Bookings: 0276-74-0145 (Booking required at all times)
- Admission: Free

C-2

Tatara Fresh Farm

A strawberry farm (with shop) located between Tatara-numa and the Gunma Museum of Art, Tatebayashi. Wheelchair and pushchair access OK because of the elevated picking stands.

- Address: 1835 Hinata-cho, Tatebayashi City
- Open: 10:00 - 16:00 Jan 3 - late May (Shop open from Dec 10)
- Cost: Adult ¥900 - ¥1,600, Child ¥800 - ¥1,400, Infants free
- Bookings: Not required (but reservations given priority)
- Tel: 0276-47-3815

Tourist Farm



B-2



October Cherry Blossoms and Autumn Leaves

From October to November the cherry blossoms are in bloom and from mid-November to early December the autumn leaves are changing their colors around the Tatebayashi Daini Museum and the Former Villa of Akimoto. The changing leaves are lit up at night making for a wonderful evening atmosphere.

B-3

The Swans of Jo-numa and Tatara-numa

Every year from around mid-November to early March about 200 swans, including the whooper swan and tundra swan, fly in to the lakes of Jo-numa and Tatara-numa.

Jo-numa ■ Viewing Spot: Northside of the old Tsutsujigaoka Park Inn
■ Feeding Time: 7:30 - 8:00 B-4

Tatara-numa ■ Viewing Spot: Sunset Path (on the Northeast shore of Tatara-numa)
■ Feeding Time: 8:00 and 15:00 - 16:00 B-2

An abundance of natural beauty and a rich culture can be enjoyed in Tatebayashi with the passing of the seasons.

A Place of Four Seasons

Cherry Blossom and Carp Streamer Festival

In spring, the famous spot for cherry blossom, Tsuruda River, sees cherry blossoms in full bloom on both its banks. At the same time, visitors can enjoy the spectacular sight of over 4,000 carp streamers dancing in the sky in various places around the city.

A world record of 5,283 carp streamers across the whole city was recorded in 2005.

● Cherry Blossom Festival: Mar 25 - Apr 9 ● Carp Streamer Festival: Mar 25 - May 15

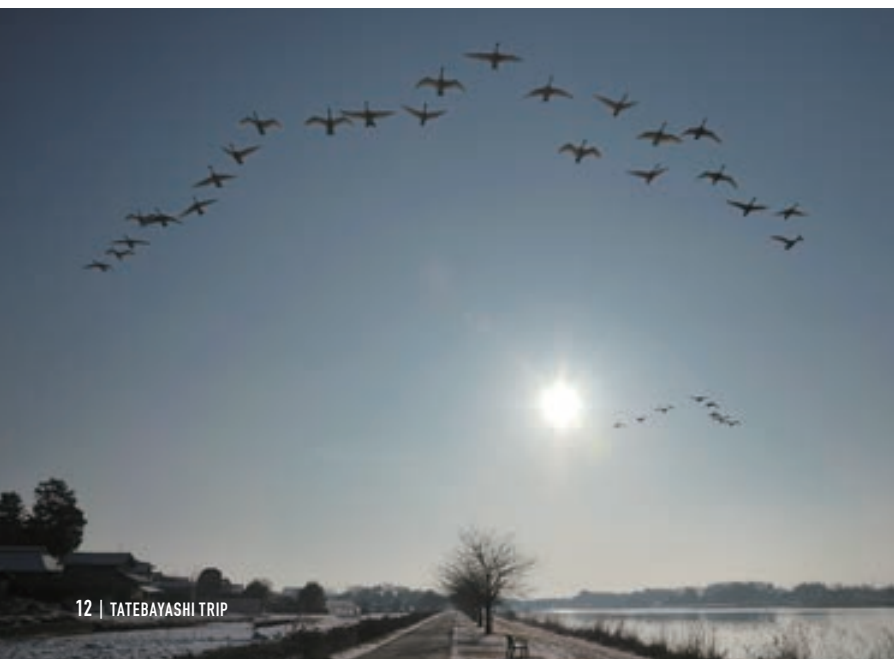
Hand Held Fireworks Display

The power bursting Hand Held Fireworks Display from the Mikawa region, home to the Tatebayashi daimyo, Sakakibara. This thrilling spectacle, not usually seen in the Kanto region, is a must-see.

Enjoy the star mine fireworks show too.

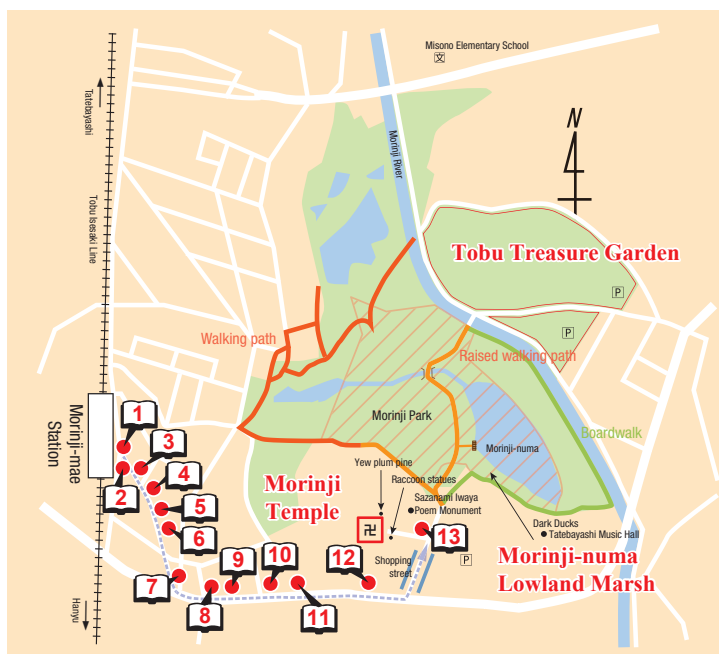
● Late July / Tatebayashijo Yumehiroba

B-3



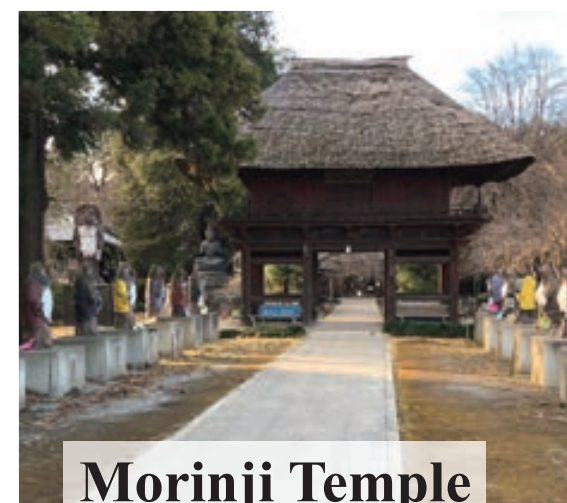
The Lake of Prayer Morinji-numa Area C-3

A lake in the southern part of Tatebayashi City. There is a lowland marsh in Morinji-numa preserving the natural environment of valuable aquatic plants and animals. On the banks of the marsh sits Morinji Temple, a place of worship.



Bunbuku Chagama Information Boards (13 in total)

A total of 13 picture book-style boards can be found on the roughly 660m path from the Morinji-mae Station to Morinji Temple, enabling visitors to enjoy the folktale on their way up to the temple.



Morinji Temple

A temple home to the Bunbuku Chagama legend.

A legendary temple home to the Bunbuku chagama (tea-kettle) owned by a Buddhist priest who turned out to be an ancient raccoon dog, giving luck (bunbuku) to all those who drank from it. A “Bunbuku guide” gives free tours on the history and stories of Morinji Temple (booking required). The 25 raccoon statues lined up along the approach path to the temple is a sight only found at Morinji Temple. The statues are dressed up in yukata and other costumes depending on the season, making this a tourist attraction that you will never get tired of seeing.



- Address: 1570 Horiku-cho, Tatebayashi City
- Admission: Free
(Treasure Hall: adult ¥300, child ¥150)
- Open: 9:00 - 16:00 (sometimes closed Thurs)
- Parking: Free (paid parking for coaches)
- Guide Contact: Tatebayashi City Tsutsuji-no-machi Tourism Division (0276-74-5233)



Morinji Temple's Yew Plum Pine (Gunma Prefecture Natural Monument)

The yew plum pine situated to the right of Morinji's main temple hall is said to have been planted as a protection against harm in 1426 due to its pointed leaves. With a height of 14m, trunk circumference of about 2.85m, and 9m long branches, this yew plum pine is a monster of a tree and one of very few ancient trees in Gunma Prefecture.



Morinji-numa and Lowland Marsh (Gunma Prefecture Natural Monument)

Morinji-numa and its surrounding marshlands are areas where aquatic plants, such as nuphar japonica (East Asian yellow water-lily), marshland plants such as Japanese iris, grassland plants, and forest plants such as quercus serrata (jocham oak), grow. The area was named Morinji-numa and Lowland Marsh and designated as a natural monument in Gunma Prefecture in 1960.

The eight blessings of the Morinji raccoon

- 1. Straw Hat: To be prepared for any unexpected troubles.
- 2. Face: To be friendly, gracious, and give credit to others.
- 3. Eyes: To make good judgments based on proper understanding.
- 4. Belly: To not panic or get upset, to be confidently determined.
- 5. Tail: To cast aside self-interest and see things through to the end.
- 6. Promissory Note: To gain the trust and confidence of others for good communication.
- 7. Sake Flask: To be grateful for one's daily food, eat and drink in moderation to ensure a long life.
- 8. Giant Scrotum: To be promised luck with money and greater wealth.



Sazanami Iwaya's Bunbuku Chagama Folktale Monument

Sazanami Iwaya, a writer of fairy tales in the Meiji era, turned the story of Bunbuku Chagama, which was a story for entertainment in the Edo period, into a folktale, publishing the story in the 1894 edition of *Old Tales of Japan*. As a result, the name of Morinji became widely known. This monument was built on the grounds of Morinji Temple in 1959.

The Lake of Fertility Tatara-numa Area B-1・2

A lake located in the northwestern part of Tatebayashi City, named after the former Tatara steelworks. With reclamation and development by Oya Kyuhaku, the plateau in the southern part of the Tatebayashi area became a fertile farm belt producing an abundance of rice and wheat crops.



Tatara-numa Fishing Pier (fishing spot)

The fishing pier on the north shore of Tatara-numa is one of the best fishing spots in the Kanto region. As well as being a place visited by many, fishing for common carp and Japanese crucian carp, it is also known as a great place to see the sunset where some wonderful views can be found. Enjoy the beauty of nature at the pond while fishing or boating.

- Day Fishing: Boat fishing ¥2,000 / Land fishing ¥500
- Rowing boat (two-seater): ¥1,000 (1 hour)
- Tel: 0276-73-8696 (Hinata Fishing Cooperative)



Path of Sculptures

A walking path with 38 sculptures to explore

A walking path between Takane-cho and Matsunuma-cho, Tatebayashi City. This Path of Sculptures (about 2km in length) is located in the pine forest of Tataranuma Park. It is said that the Tatara forest reserve not far from Tatara-numa was planted as a windbreak and sand protection forest during the Warring States period. The Path of Sculptures project began in 1990 with 38 sculptures, mainly the works of artists related to Tatebayashi City and Gunma Prefecture, placed along the walking path through the pine forest. It's a popular spot for taking in works of art while walking around Tatara-numa.



Wheat Culture

The eastern part of Gunma prefecture, home to Tatebayashi, is sandwiched between the Tone and Watarase rivers whose flooding has cultivated the rich, fertile soil. The long sunlit days and abundance of high-quality underground water flowing from Mt. Akagi also helped contribute to the development of wheat culture.

Freshwater Fish Food Culture

In the Tatebayashi area studded with lakes, freshwater fish cuisine has been eaten as a culture of food for many, many years. One of the features of Tatebayashi's outing culture is its serving of freshwater fish dishes. Of its freshwater fish, catfish is famous, visitors can enjoy its soft meat similar to whitefish with no peculiar taste. Tempura and *tatakiage*, covered in flour and deep fried, have become typical local dishes.



Old Inland Sand Dunes Wonderfully formed inland riverside dunes

Following the Tone River from the old Tokyo Bay, the channel extends to the former shallow seabed. The Tone River deposited layers of Tatebayashi sand to the Tomo area, and along with Arakawa River carried sand to the Omiya plateau area. The old inland dunes are a sandy layer of natural embankment formed by the Tone River at that time.

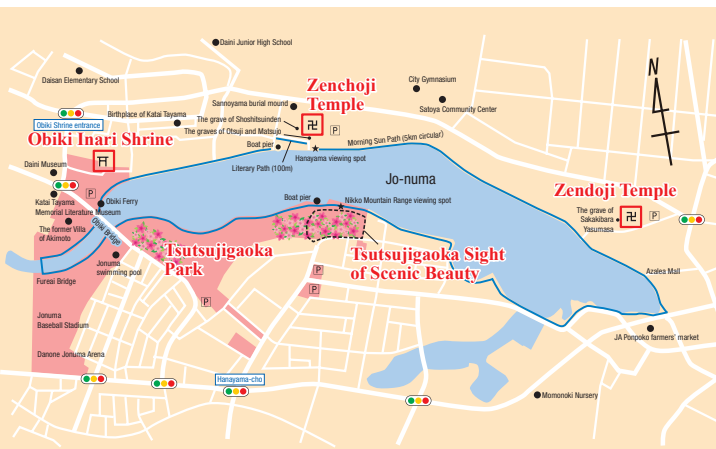


The Grave of Oya Kyuhaku Oya Kyuhaku, a pioneer for improving agricultural production

Retainer to Uesugi Norimasa, Lord of Hirai Castle in the Tano district. At the invitation of the Lord of Tatebayashi Castle, Nagao Akinaga, the Lord of Kanayama Castle Yura Narishige's retainer Kozaemon Arayama and others cooperated, and so developed the upper irrigation canal (irrigation water from Uchigashima in Ota City to Owa in Meiwa-machi) and the lower irrigation canal (irrigation water from Tatara-numa Eguro in Meiwa-machi). 1.5 million pine trees were also moved from Ota Kanayama and replanted as a windbreak forest to create the Oyahara Forest.

The Lake of Protection Jo-numa Area

B-3・4



Zendoji Temple The temple where Sakakibara Yasumasa, one of the Four Guardian Kings of the Tokugawa family sleeps

A temple on the northeast shore of Jo-numa. In 1590, the owner of Tatebayashi Castle, Sakakibara Yasumasa moved Zendoji Temple to a new place near the castle (now Honcho 2-chome), making it his family temple. Moved to current location in 1990.



Former Jomo Muslin Office (Gunma designated important cultural property)

Situated inside the Tatebayashi Daini Museum, Jomo Muslin was a company established in the middle of the Meiji era which was involved in the development of the town. It is a two-story western-style wooden building registered as a Gunma Silk Heritage site.

Katai Tayama

- Author of *The Quilt* and *Country Teacher*



PROFILE

Born December 13, 1871. Moved to Tokyo in 1886. While studying Japanese poetry with aspirations for literature, Tayama opened his eyes towards Western European literature. From the late 1890s, he was a pioneer in establishing the literary genre of naturalistic novels, culminating in the *The Quilt* being published in 1907. Later he published numerous works including *Country Teacher*, becoming one of the most notable writers in Meiji literature.



Katai Tayama Memorial Literature Museum

■ Address: 1-3 Shiromachi, Tatebayashi City
■ Open: 9:00 - 17:00
■ Closed: Monday and day after national holidays
■ Admission: ¥220
(free for junior high school students and under)
Artifacts relating to the writer are collected, preserved and exhibited with his achievements showcased from many different perspectives.



Former Residence of Katai Tayama

The former residence situated in the Tatebayashi Daini Museum is where Tayama spent his childhood. His work had a strong sense of belonging home, so much so that a literary genre sprung up from his writings.



Tatebayashi Castle Ruins (Tatebayashi designated historic site)

In modern times it became the hereditary domain castle of the Tokugawa clan, including Sakakibara Yasumasa and Tokugawa Tsunayoshi. At present, most of the castle remnants are lost, but some earthworks remain.

A lake in the center of Tatebayashi City. It became a natural hazard at the time when the early modern period Tatebayashi Castle was built. On its southern shore is the nationally designated scenic spot of Tsutsujigaoka, and on the northern shore is Zendoji Temple, which tells the legend of Otsuji. There is also the Literary Path and the Morning Sun Path around the lake where all four seasons can be experienced while taking a walk.

Originally a village shrine located in Obiki-cho, Tatebayashi City. Founded by Terumitsu Akai in 1532 at the time of the construction of Tatebayashi Castle in the northeastern corner of the castle (known as the “demon’s gate”, or weak point) as a guardian deity. For this reason, the shrine faces west, in the opposite direction to the main enclosure of Tatebayashi Castle at that time, unusual for a shrine building. The Tatebayashi Castle Ema, a wooden plaque pictured with how the area looked around Tatebayashi Castle in 1873, was also given to the shrine.



Obiki Inari Shrine

Obiki Inari Shrine, handed down along with the legend of the castle fox



Obiki Ferry A ferryboat connecting the southern and northern shores of Jo-numa

From mid-April to early May, boats depart from Tsutsujigaoka Park to Obiki Parking Lot and Zendoji Temple. Experience Sato-Numa for yourself while taking in the ferryman’s stories.

From early July to mid-August, the boat changes to the Lotus Flower Pleasure Boat cruising through the lotus flowers on Jo-numa.

Zendoji Temple A temple that tells the tale of Otsuji and Matsuma, the origins of Tsutsujigaoka

A temple on the north shore of Jo-numa. Located on the opposite bank to Tsutsujigaoka on the southern shore. Here also are memorial towers to Otsuji and Matsujyo, related to the legend of Tsutsujigaoka; a temple hall dedicated to Kannon; and the ancient burial mound of Sannoyama. During the azalea season, a ferry also runs between Zendoji Temple and Tsutsujigaoka Park on the opposite bank, attracting many tourists.



Zen Meditation (Morinji Temple)

Located on the shore of the Lake of Prayer (Morinji-numa) is Morinji Temple where you can practice Zen meditation.

Why not bring peace to your heart and refresh the mind? (Booking necessary)

Booking/contact: Morinji Temple

Address: 1570 Horiku-cho, Tatebayashi City

Tel: 0276-72-1514

Open: 9:00 - 16:00 (sometimes closed Thurs) C-3

Soothe the soul and meditate on the moment at the lake's edge



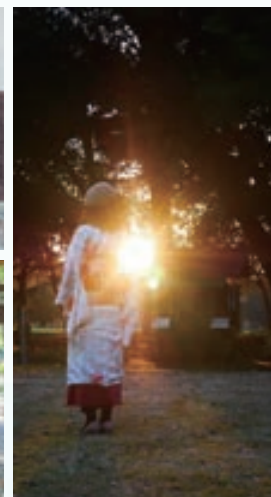
Put on your favorite kimono and slip back in time to the Edo period!

Walk Around Town in Kimono

As well as the traditional woven fabric called Tatebayashi Tsumugi which has been around since the Kamakura period, the Tatebayashi townscape still retains the atmosphere of the old castle town. Visitors can rent a kimono, so why not take a walk around the town and lake in a kimono? (Booking necessary)

Contact: Tatebayashi City Tourism Association

Tel: 0276-74-5233



Bird Watching (Sato-Numa)

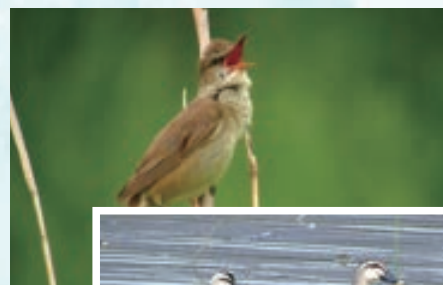
Morinji-numa, Tatara-numa, and Jo-numa each have their own unique natural environment where there is a treasure trove of wild birds.

Depending on the season, you can see many wild birds such as ducks, kingfishers, and swans, a great place to come for any "twitcher"!

Contact: Tatebayashi City Tourism Association

Tel: 0276-74-5233

A natural experience unique to Sato-Numa, a treasure trove of nature



Sato-Numa Sightseeing Experience

The charm of Sato-Numa is deepened through experience and recreation. Here, we highlight a selection of sightseeing experiences, including history, nature, and food culture to check out.

Make some of Tatebayashi's specialty udon and enjoy the taste

Udon Making (Morijin)

Have a go at kneading silk powder and making the white, glossy Mayutama udon at the Morinji udon shop in front of Morinji Temple. After making your lovely udon, cook it there and savor the taste! (Booking necessary. Max 6 people.)

Booking/contact: Morijin

Address: 1560 Horikuchō, Tatebayashi City

Tel: 0276-75-0490

Open: 11:00 - 17:00 (closed Tues) C-3



Souvenir Woodworking (Natural Woody Kirikabu)

A woodworking souvenir shop on Morinji shopping street. The staff will teach you everything you need to know so anybody can make a souvenir out of wood.

The store also sells high quality products such as wooden toys, lacquer ware and other things. (Booking necessary)

Booking/contact: Natural Woody Kirikabu

Address: 1570 Horiku-cho, Tatebayashi City

Tel: 0276-72-8895

Open: 10:00 - 18:00 (open every day) C-3

Try your hand at wood carving at a temple using Japanese cypress!





Tatara-
numa

100 Best New Japan Walking Pathways Route

Sunset and the Path of Sculptures

A route where the beautiful scenery of Tatara-numa and the setting sun can be seen. On this route you can find the Gunma Museum of Art, Tatebayashi, elevated heights and Ukishima Benzaiten Shrine. Also, about 38 sculptures are dotted along the Path of Sculptures in the pine forest, making it a wonderful place to enjoy the pieces of artwork while taking a walk in the fresh forest air.



Gunma Museum of Art,
Tatebayashi



Swans flying above Ukishima
Benzaiten Shrine

Suggested Route	
Gunma Museum of Art, Tatebayashi	Gunma Greening Center
0.6 km	1.0 km
Path of Sculptures	Bird hide
2.7 km	0.5 km
Ora-Tataranuma Park (Gaba-numa)	Tataranuma Park
1.0 km	2.3 km
Ukishima Benzaiten Shrine	Gunma Museum of Art, Tatebayashi
1.4 km	



Morinji-
numa

100 Best New Japan Walking Pathways Route

The Road of Nature and Home of Fairy Tales

Starting from Morinji Temple, many wild birds, flora and fauna can be seen in such places as Morinji-numa and the lowland marshes, as well as in Tobu Treasure Garden with its flowers blooming all year round. There are also toilets, places to take a break, and restaurants along the way making this an easy route to walk.

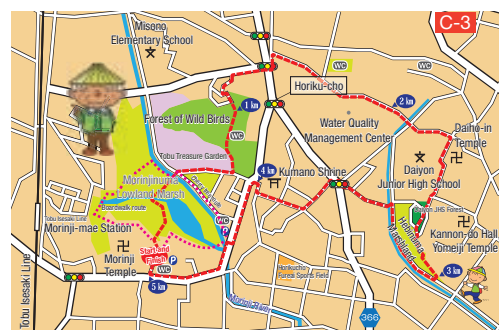


Tobu Treasure Garden



Prickly water lily, Hebi-numa

Suggested Route	
Morinji Temple	Water Quality Management Center
0.07 km	0.8 km
Morinji Park (boardwalk)	Hebi-numa Marshland
0.6 km	1.5 km
Tobu Treasure Garden	Kumano Shrine
0.21 km	0.8 km
Forest of Wild Birds	Morinji Temple
0.82 km	



Clear night skies and a walker's paradise

Mukai Chiaki Children's Science Museum



Tatebayashi is close to space. The Science Museum which commemorates Chiaki Mukai, an astronaut from Tatebayashi, is a very popular place for children. The area around Sato-Numa has also been selected as one of the 100 Best New Japan Walking Pathways, and visitors will be able to explore Sato-Numa while taking in the beauty of the surrounding nature and culture.



Have fun learning about science with the many different hands-on activities, and exhibits relating to Chiaki Mukai. The planetarium with its 23m wide large dome and the moonwalker are also very popular.

- Address: 2-2 Shiromachi, Tatebayashi City
- Tel: 0276-75-1515
- Open: 9:00 - 17:00 (Last entry at 16:30)
- Closed: Mon. and day after national holidays, and New Year holidays
- Admission: Adult ¥330, free for junior high school students and under
- Planetarium Admission: Adult ¥550, elementary and junior high school students ¥220, free for younger children

B-3

Jo-numa

100 Best New Japan Walking Pathways Route

Path of History and Culture and Path of the Morning Sun

On the Path of History, visitors can enjoy the atmosphere of a castle town harking back to Tokugawa Tsunayoshi with houses that still retain the atmosphere of the old townhouses. Along the Path of the Morning Sun, visitors can take in the beautiful views of Jo-numa and the rising sun, and with Tsutsujugaoka Park and Zendoji Temple, there's plenty of historical culture and natural scenery to enjoy.



Shozo Tanaka Museum



Former Geisha House and Restaurant
Partnership Offices

Suggested Route	
Plaza in front of Tatebayashi Station East Exit	Tsutsujigaoka Park
0.4 km	1.9 km
Kezuka Museum	The former Villa of Akimoto
1.8 km	1.2 km
Tatebayashi Castle Ruins, Dobashi Gate	Buyokan and Shozo Tanaka Museum
0.9 km	0.6 km
Obiki Inari Shrine	Former Geisha House and Restaurant Partnership Offices
1.0 km	0.9 km
Zenchoji Temple	Plaza in front of Tatebayashi Station East Exit
3.5 km	



TATEBAYASHI EVENT CALENDAR



Azalea Festival

Tatebayashi in the spring is the azalea festival. Flower viewing has been going on for nearly 400 years, and Tatebayashi is where it's at for the best time to see the vibrant colors.



Tatebayashi Festival

A summer festival held over two days centered around Honcho Street. Enjoy the folk dancing, the *mikoshi* (portable shrines) carried by the strong arms of the grown-ups, and the parade.



Festival of Industry

Producers, businesses and consumers from Tatebayashi's agriculture, industry, and commerce come together for a "lifestyle festival" that promotes exchange.



Autumn Leaves Light Up

Enjoy a fantastic lighting up of the autumn colors like leaves floating in the night sky.



Seven Deities of Good Fortune Tour

The Seven Deities of Good Fortune Tour in Tatebayashi is a circuit pilgrimage as well as a tour of historical landmarks. Get stamps from all seven places and have good luck for a whole year.



Events Through the Year

A host of seasonal events are one of the attractions of Tatebayashi. Please enjoy the many different faces of Tatebayashi throughout the year.

April - May	June	July	August	October	October	November	December	January - February	March
Azalea Festival Date: April 10 - May 15 Place: Tsutsujigaoka Park Tobu Treasure Garden Spring Opening Date: Early April to early June Place: Tobu Treasure Garden Tatebayashi Noodle Grand Prix Date: Late April Place: Tatebayashijo Yumehiroba	Iris Festival Date: Early June to late June Place: The former Villa of Akimoto	Super Hot, Super Sweet, Super Cold Food Election Date: Early July to late August Place: Restaurants in Tatebayashi City Lotus Flower Festival Date: July 10 - August 15 Place: Tsutsujigaoka Park Tatebayashi Festival Date: 2nd weekend in July Place: Honcho Street - Shitamachi Street Hand Held Fireworks Display Date: 4th Saturday in July * July 25, 2020 Place: Tatebayashijo Yumehiroba	Tanabata Festival Date: August 7 Place: Honcho Street - Shitamachi Street	Halloween Night in Tatebayashi Date: 3rd Saturday in October Place: Shitamachi Street	Morinji Chrysanthemum Show Date: October 28 - November 18 Place: Morinji Temple	Festival of Industry Date: 3rd Sunday in November Place: Tsutsujigaoka Park Autumn Leaves Light Up Date: Late November to early December Place: The former Villa of Akimoto	Tsutsujigaoka Park Illuminations Date: Mid-December to late January Place: Tsutsujigaoka Park Candle Road in Morinji Temple Date: December 31 Place: Morinji Temple	Seven Deities of Good Fortune Tour Date: January 3 to January 31 Place: Shrines and temples around Tatebayashi First Market of the Year Date: January 18 Place: Nakamachi Street - Kagome Street	Cherry Blossom Festival Date: March 25 to April 9 Place: Around the Tsuruuda River, Tatara Forest Reserve, Kondonuma Park, Former Tsutsujigaoka Park Inn Carp Streamer Festival Date: March 25 to May 15 Place: Tsuruuda River, Kondonuma, Morinji River, Former Tsutsujigaoka Park Inn, Tatara-numa



Tobu Treasure Garden

From April through June, visitors are able to see the flowering of moss phlox, nemophila, and spring roses.



Lotus Flower Festival

The Lotus Flower Pleasure Boat affords refreshing views only to be found in Tatebayashi. Tsutsujigaoka Park also showcases different lotus flowers from around the world during the festival.



Hand Held Fireworks Display

Power bursting hand held fireworks from the Mikawa region, home to the Tatebayashi daimyo, Sakakibara. Enjoy the show studded with star mine fireworks too.



Tsutsujigaoka Park Illuminations

Enjoy some 25,000 LED lights centered around the Tsutsujigaoka Fureai Center.



Cherry Blossom Festival

Held at 3 venues around the city, many people gather around the banks of the Tsuruuda River with the lanterns lit up in the evening time. The cherry blossom lit up at night looks fantastic.



Carp Streamer Festival

Flying over 4,000 carp streamers at 5 venues around the city. A world record of 5,283 carp streamers was recorded in 2005.

Nature and Historic Site Tour

Experience the natural scenery and fertility of Sato-Numa. Taking in all the historic spots on the Seven Deities of Good Fortune Tour is well recommended.

Winter

SPOT 1 Swan Watching (Jo-numa and Tataru-numa)

Tatebayashi is famous for bird watching. In the peak season of January to February, nearly 200 swans fly into land at Jo-numa and Tataru-numa.



SPOT 2 Strawberry Picking (Tatara Fresh Farm)

A tourist farm located on the shores of Tataru-numa. Everyone can pick the fruit because of the elevated picking stands. (Open: Jan - May)



SPOT 3 Freshwater Fish Delights (Restaurants in Tatebayashi)

The freshwater fish, a staple of Tatebayashi's "fertility" has a deep connection with the long-loved Sato-Numa. Savor the delights of eel, catfish and carp.



SPOT 4 Seven Deities of Good Fortune Tour (various temples and shrines)

The Seven Deities of Good Fortune Tour in Tatebayashi is held from January 3 to 31. Only during this period can you get stamps from the various temples and shrines on your card pictured with a treasure ship bearing the Seven Deities of Good Fortune. Why not have a go and find your good fortune!



SPOT 5 Tsutsujigaoka Park Illuminations

From December to January, the area around Tsutsujigaoka Fureai Center is lit up with LED lights to create a fantastic sight.



Museum Tour

Take a tour of the four different museums, from milling and art, to azalea and fermentation, learning about the Tatebayashi history, industry, and famous works of art.

Autumn

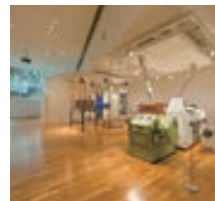
SPOT 1 Azaleas Film Museum

As well as the exhibitions on azalea and Sato-Numa, and the 4D theater, there is also a gallery with works by Tatebayashi print artist, Mamoru Kogure. Mascot character, Pon-chan products also on sale.



SPOT 2 Nisshin Milling Museum

A museum on flour milling, seldom seen anywhere in the world. Workshops using wheat are also held.



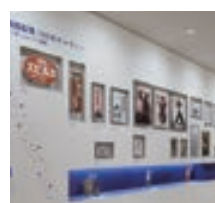
SPOT 3 Savor Wheat Culture!

Enjoy a bowl of flour-based food such as udon or ramen after you visit the Nisshin Milling Museum. Be sure to check out "Hyaku-Nen Udon" and "Tate-Ra"!



SPOT 4 Calpico "Mirai" Museum

All the fun of Calpico, loved by everyone! Make your very own Calpico, just the way you like it! * Prior booking required for factory tour.



SPOT 5 Gunma Museum of Art, Tatebayashi

An art museum on the shores of Tataru-numa with the theme of nature and mankind. Nearby is the Path of Sculptures where you can enjoy a walk among art.



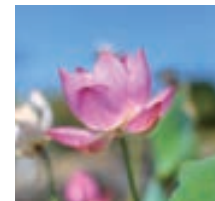
The "Hottest" Town Tour

Summer in Tatebayashi is not just hot! Experience the summer heat with super-hot food and the hand held fireworks! But of course, cool and refreshing is the way of Tatebayashi, too.

Summer

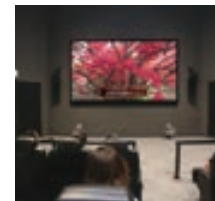
SPOT 1 Lotus Flower Pleasure Boat

A spectacular pleasure boat weaving through the masses of lotus flowers in Jo-numa. The best time to see the flowers in bloom is in the morning.



SPOT 2 Azaleas Film Museum

The world's first 4D azalea theater! Experience the azalea all year round. As well as the azalea, there is also a movie about the Japan heritage, Sato-Numa.



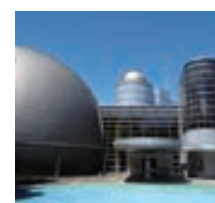
SPOT 3 Hot Food Fest

Special menus of super-hot, super-sweet and super-cold food available at restaurants around the city for a limited time only during the summer. Look for the 激グルメ (geki-gourmet) mark!



SPOT 4 Mukai Chiaki Children's Science Museum

As well as an introduction to astronaut Chiaki Mukai and the exhibition of artifacts, visitors can also enjoy the largest planetarium in Gunma Prefecture.



SPOT 5 Hand Held Fireworks Display

Don't miss the hand held fireworks that spout magnificent columns of fire! Enjoy also the star mine that colors the summer night sky.



Flower Tour

Spring is the season when Tatebayashi is at its most brightly colored. It's impossible not to be captivated by the blossoming flowers, especially the azaleas!

Spring

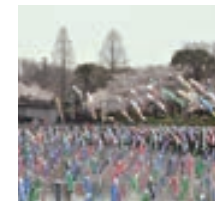
SPOT 1 A Walk down the History Path

This walk lingers with the nostalgia of the old castle town. Even now, there are many historic buildings and precious cultural assets to be found along the route.



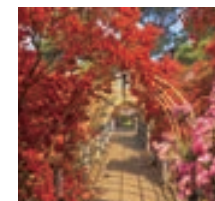
SPOT 2 Carp Streamer Festival

Impressive carp streamers recorded in the Guinness Book of Records! The main venue is the banks of the Tsuruuda River.



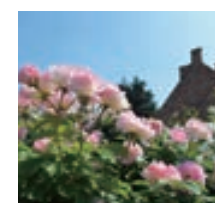
SPOT 3 Azalea Festival

Take a closer look at the world's best azalea. Various events also held during the festival period.



SPOT 4 Tobu Treasure Garden

In spring the flowers bloom from moss phlox to nemophila and then the roses, colored like a beautiful English garden.



SPOT 5 Morinji Temple

Each one of the 25 raccoon dog statues which line the approach up to the temple is different with their own unique character.



Lots of local vegetables and souvenirs / JA Ora-Tatebayashi Farmers' Market Ponpoko



B-4 A popular tourist spot that sells local specialties as well as fresh vegetables from the Tatebayashi area.
Open: 9:30 - 18:30 (Apr - Oct)
9:30 - 18:00 (Nov - Mar) (closed Mon)
Address: 1987-1 Kusunokicho, Tatebayashi City
Tel: 0276-70-7788

Stop here first after getting off at Tatebayashi Station / Tourist Information Center in front of Tatebayashi Station



B-3 Tourist information center other side of roundabout outside east exit of Tatebayashi Station. Here, you will find tourist information to suit the season.
Open: 9:00 - 16:00 (closed Wed)
Address: 2-3-1 Honcho, Tatebayashi City
Tel: 0276-71-8711

See the City by Bicycle



Free Bike Rentals

Tatebayashi Station (East Exit)
Kimura Bicycle Stand ■ Address: 2-3-50 Honcho, Tatebayashi City



Morinji-mae Station

Hasumi Bicycle Stand ■ Address: 1624-47 Horikuchu, Tatebayashi City



Ginrin Bicycle Stand ■ Address: 1624-18 Horikuchu, Tatebayashi City

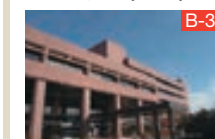


Pon-Chari

Rental Time: 8:30 - 17:00 (last rental 16:00)
* Different closing days for each location
(Tel: 0276-74-5233)

Tatebayashi City Hall

Tatebayashi City Hall (general information) ■ Address: 1-1 Shiromachi, Tatebayashi City



Tatara Station

Bicycle stand in front of Tatara Station ■ Address: 969 Hinatacho, Tatebayashi City





Menya Teru-no-Bo

1063-1 Aoyagicho, Tatebayashi City
080-7809-1151

C-3

Niboshi soba
The soup made only with eight kinds of *niboshi* (dried infant sardines) and water is simple yet packed full of flavor.



Shige Soba

963-6 Horikuchō, Tatebayashi City
0276-57-6234

C-3

Shige soba
The delicately flavored soup of light soy sauce goes perfectly with the thin and straight Takasui-marumen brand of noodles



Ramen Tamichan

2-17-32 Honcho, Tatebayashi City
0276-74-5959

B-3

Explosive!! Miso char siu noodles (weekends only)
The umami flavor and spiciness of the slowly matured homemade miso will blow your head off!



Suzuya

1052 Oyacho, Tatebayashi City
0276-72-1179

C-2

Playing with fire Tanmen
Tanmen noodles with plenty of spicy miso-based vegetables. Many layers of addictive spiciness.



Ramen Kitchen - Porepore

1-32-8 Midoricho, Tatebayashi City
0276-72-7774

C-3

Soy sauce and salt two-in-one
Enjoy two flavors of homemade noodles in a chicken, pork, vegetable and hint of seafood soup.



Kanjuku Miso Ramen - Kanade

847-1 Kokuwabaracho, Tatebayashi City
0276-59-7232

C-3

Kaburitsuki char-siu miso ramen
The pork umami is a perfect match with the miso and vegetables! And huge chunks of char siu pork falling out of the bowl.



Udon Honmaru

3-8-1 Honcho, Tatebayashi City
0120-57-3741

B-3

As well as using fresh noodles used only for shops, seasonal ingredients and catfish tempura are also available.



Hanayma Udon

2-3-48 Honcho, Tatebayashi City
0276-74-7766

B-3

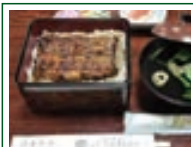
A long-established udon eatery in Gunma, scoring three straight wins in the Udon World Championship. Oni Himokawa (extra wide noodles) is the signature dish.



Udon, Tatebayashi's soul food. Enjoy the "Hyaku-Nen Udon"

TATEBAYASHI Local Food

Tatebayashi has been blessed with a culture of wheat and freshwater fish since ancient times, developing as a town of good food. Here, we introduce some of Tatebayashi's udon, ramen, freshwater fish and Japanese confectionery.



Uomata

1149-2 Hinatacho, Tatebayashi City
0276-72-0888

B-2

Esteemed freshwater fish cuisine, born in natural climes. Enjoy nostalgic, local flavors passed down from generation to generation since the restaurant's founding.



Uotake

6-31 Nishihoncho, Tatebayashi City
0276-72-0247

B-3

Enjoy the taste of eel, a traditional recipe for 90 years since the restaurant's founding. Everyone from children to the elderly appreciate this food.



Uotama

1233-1 Shimomibayashicho, Tatebayashi City
0276-73-4888

B-2

"Eat to your heart's content"
The 4th generation restaurant owner enthusiastically and wholeheartedly grills the fish. Pictured is the broiled eel (large) served over rice in a lacquered box.

Freshwater Fish

Freshwater fish dishes vital to the culture of Sato-Numa. Relish the catfish and eel.



Shanhaitei

1-42 Daijukuicho, Tatebayashi City
0276-73-1617

B-3

Moyashi ramen
A perfect dish combining soy sauce-based soup with *moyashi* (bean sprouts). Pictured is the broiled eel (large) served with medium-thick noodles.



Gochiya

2299-2 Hanayamacho, Tatebayashi City
0276-72-7355

B-4

Salty leek ramen
Enjoy the salted, glossy and chewy noodles matured in two stages of hot and cold.

Japanese Confectionery

Tatebayashi's Japanese confectionery continues to evolve with the times. How about getting some as a gift?



Yamada Fish Restaurant

1-12-16 Midoricho, Tatebayashi City
0276-72-1872

C-3

Meaty, charcoal grilled eels coated with a secret sauce.

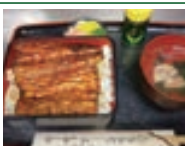


Machida Fish Restaurant

7-11 Nishihoncho, Tatebayashi City
0276-72-1163

B-3

Dishes are cooked with the flavors inherited from successive generations. Please enjoy the delicious food.



Fukawa

1-2-13 Honcho, Tatebayashi City
0276-72-0730

B-3

A small eel restaurant open only to families since 1935. The eel is cooked with traditional flavors and less sweetness.



Japanese Restaurant Hifumi

2-19-62 Matsubara, Tatebayashi City
0276-72-3811

C-4

Founded over 80 years ago. Local specialty freshwater fish dishes include deluxe and regular grilled eel on a box of rice, and catfish tempura.



Sekiguchi Fish Restaurant

1975-37 Togocho, Tatebayashi City
0276-73-1470

B-4

Not only eel but also carp sashimi and catfish tempura are popular. The vista of Jo-numa from the restaurant is also very charming.



Karatamaya

249-2 Narushimacho, Tatebayashi City
0276-74-7122

B-2

Offering a wide variety of seasonal dishes centered around deep-fried chicken and Japanese omelets.



Kusunokian

1918-3 Kusunokicho, Tatebayashi City
0276-75-2000

B-4

Entirely handmade, flavorsome, sweet and chewy udon noodles made with carefully selected wheat. The famous radish soba and freshly fried tempura are also popular.



Harada Udon Cafe

1640 Itakura, Itakura-machi
0276-82-0063

C-5

Offering coffee and delicious udon based around the cucumber cold soup udon which won 2 years running at the Noodle Grand Prix.



Kawai Noodle Shop

739 Tanakacho, Tatebayashi City
0276-73-7734

B-2

A noodle shop with love of the local, Joshu Tatebayashi area. Lots of different seasonal udon dishes available including *Hyaku-Nen Udon*.



Tenhana

32-5 Nishitakanecho, Tatebayashi City
0276-75-3362

B-2

Using carefully selected flour, the dishes are made to perfection with a flavored balance between bonito, soda bonito, and kelp.



Tanuki Soba Restaurant

421-1 Fujimicho, Tatebayashi City
0276-73-0381

C-3

Every dish is made with loving care. Please enjoy their signature dishes.



Masudaya

1-52 Daijukucho, Tatebayashi City
0276-72-0728

B-3

Handmade Japanese confectioners. Each and every cake, rooted in the local area, is lovingly made by the owner.



Japanese Confectioners Sanoya

13-26 Nishihoncho, Tatebayashi City
0276-72-1070

B-3

Using the finest ingredients, the delicious Japanese sweets are meticulously made, bringing a smile to everyone.



Mimasuya Sohonten

1-3-12 Honcho, Tatebayashi City
0276-72-3333

B-3

Producers and sellers of *mugirakugan* sweets and silk shortbread, enjoyed as Tatebayashi souvenirs and gifts since days gone by. (Pictured: marron pie)

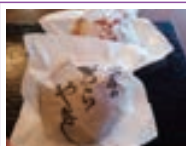


Iseyu Honten

2-3-40 Honcho, Tatebayashi City
0276-72-0558

B-3

Committed to low prices and only the finest ingredients. Reliable and great tasting.



Japanese Confectioners Matsubara no Katagiri

1-20-18 Matsubara, Tatebayashi City
0276-72-4146

B-3

A confectioner offering handmade sweets, continually searching for and passing down the great taste of Japanese confectionery and good health. Please pop in!



Komeido

1-13-15 Midoricho, Tatebayashi City
0276-73-2034

C-3

Using ingredients from Japan including Hokkaido wheat. The simple flavors all handmade are very popular.



Jimantei

6-33 Otemachi, Tatebayashi City
0276-72-2739

B-3

Miso char siu noodles 52 years of flavor, a perfect dish made with oven roasted char siu and homemade miso.



Introducing a range of very popular ramen shops with a variety of ramen noodles on offer.



Tsukemen Yashichi

1987-3 Akodacho, Tatebayashi City
090-4097-8133

C-4

Tsukemen
Extra-thick noodles using whole grains accompanied with dipping soup full of seafood flavor.



Nagomiya

6-4 Otemachi, Tatebayashi City

B-3

Amakusa Daio salty chicken soba
140g of lightly salted thin noodles made with plenty of Amakusa Daio chicken.



Ramen Kan

1534-1 Hanetsukuchō, Tatebayashi City
0276-73-1333

C-4

Soy sauce ramen
Beaten by green bamboo stems, the wrinkled noodles are the finest Sano-style Ramen.



Kanemasa

22-16 Higashi-Misonocho, Tatebayashi City
0276-73-5060

C-3

Soy sauce ginger ramen
Grated ginger specially blended into a refreshing soy sauce ramen

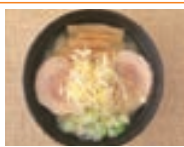


Koraku

2487-2 Matsubara, Tatebayashi City
0276-73-0074

C-4

Tanmen
Salty flavored hand-made noodles with lots of vegetables. A traditional ramen shop founded in 1972.



Menya Kaneki

2-16-13 Matsubara, Tatebayashi City
0276-73-7660

C-3

Salted white leek ramen
Made with a soup blended from animal and seafood, mixed with sesame oil and topped with flavoursome white leek.

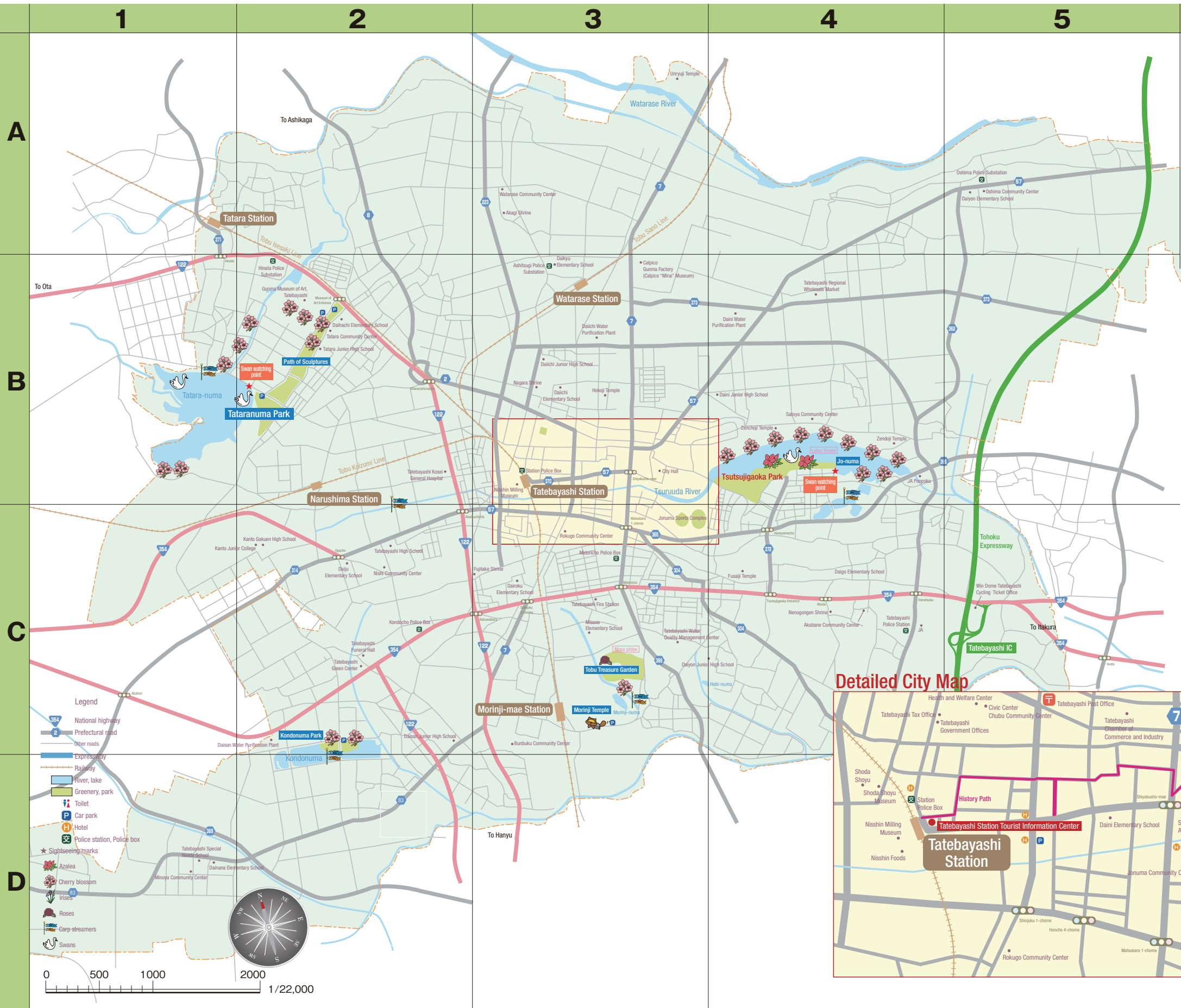
Tatebayashi Sightseeing Mascot Character

Lots of great food in Tatebayashi!



Pon-chan

Tatebayashi Area Map



Tatebayashi City is in Gunma Prefecture, known as having the shape of a soaring crane, located in the southeastern part just where the head is. It is the closest part of the prefecture to Tokyo with access taking about one hour by the Tohoku Expressway or Tobu Railway, making it a place visited by many.

